



## 23 ST. GILES CLOSE

SHOREHAM-BY-SEA, BN43 6GR

FREEHOLD

A fantastic semi-detached family home situated in this popular residential location in Shoreham. The bright and spacious accommodation comprises a through living/dining room, separate kitchen, conservatory, three bedrooms, ground floor WC and a family bathroom. A particular feature of the property is the converted garage, now providing a versatile family room/home office together with a separate storage room. Outside, there is a generous west-facing rear garden and off-street parking to the front.

Ideally positioned close to local schools, shops and transport links, this is a fantastic family home in a highly convenient location.

**Nicholas  
James**

SALES LETTINGS AUCTIONS





## Saint Giles Close

Approximate Gross Internal Area = 128.0 sq m / 1378 sq ft

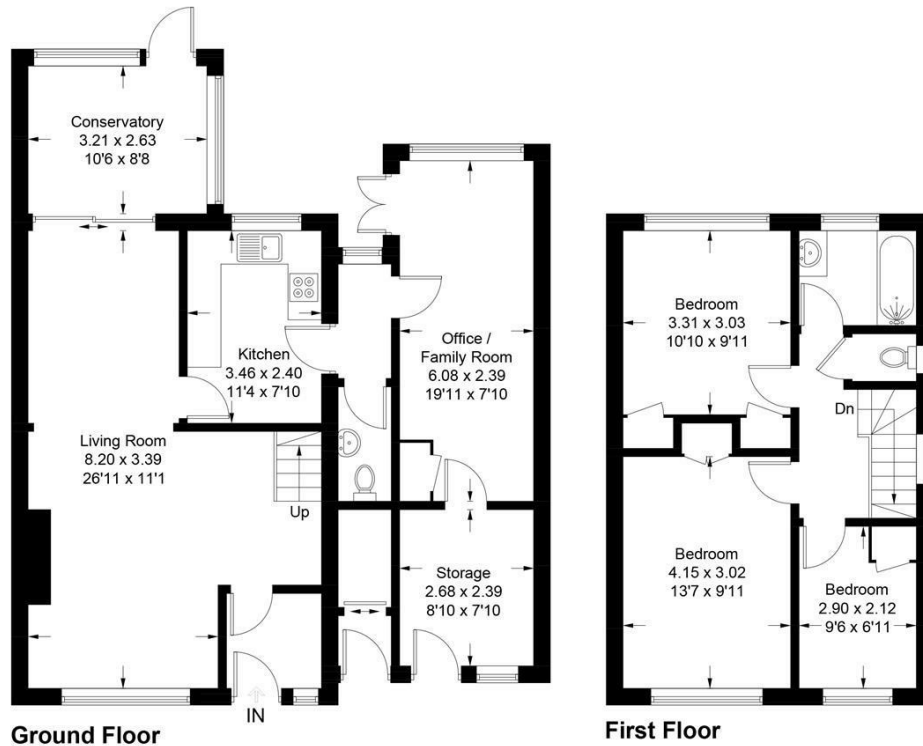


Illustration for identification purposes only, measurements are approximate, not to scale. Fourlabs.co © (ID1304857)



Agents Note: Whilst every care has been taken to prepare these particulars, they are for guidance purposes only. All measurements are approximate and are for general guidance purposes only and whilst every care has been taken to ensure their accuracy, they should not be relied upon and potential buyers/tenants are advised to recheck the measurements

Hove Sales  
Ground Floor 8 The Drive  
Hove  
East Sussex  
BN3 3JA

01273 917915  
hello@nicholasjamesproperty.co.uk  
www.nicholasjamesproperty.co.uk

Nicholas  
James

SALES LETTINGS AUCTIONS